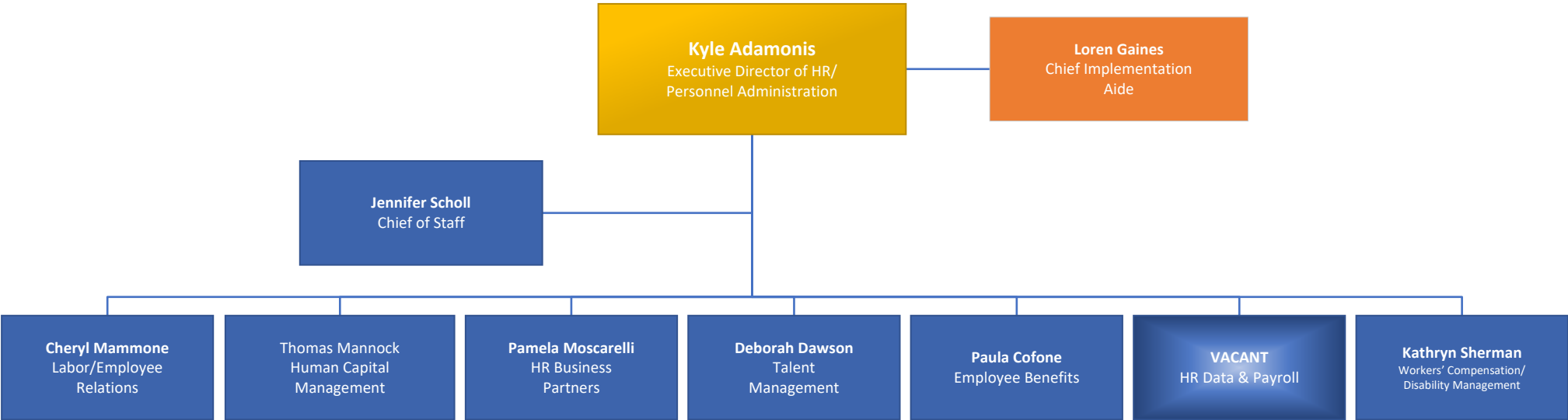
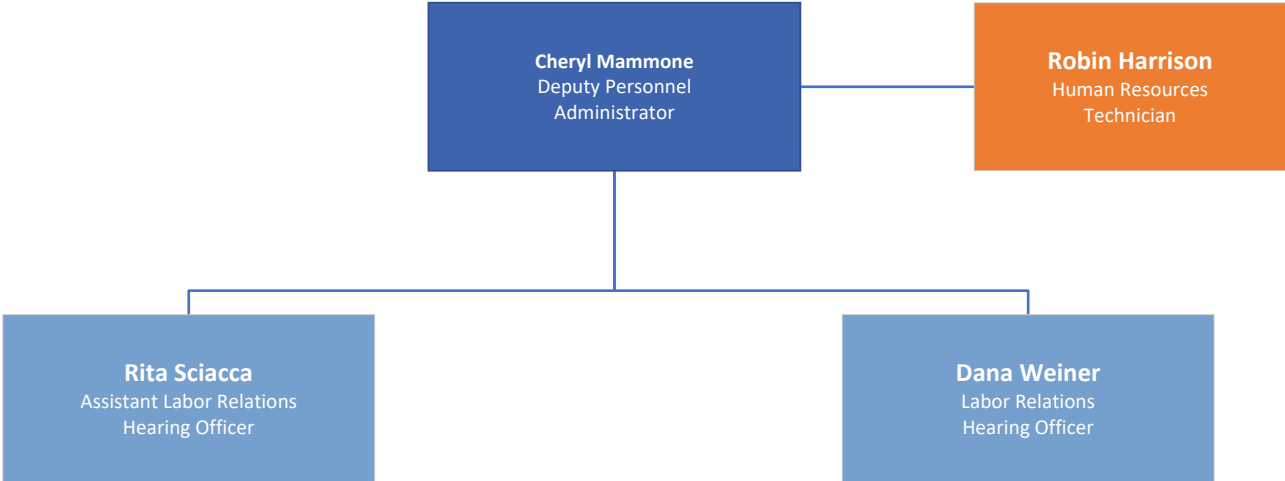


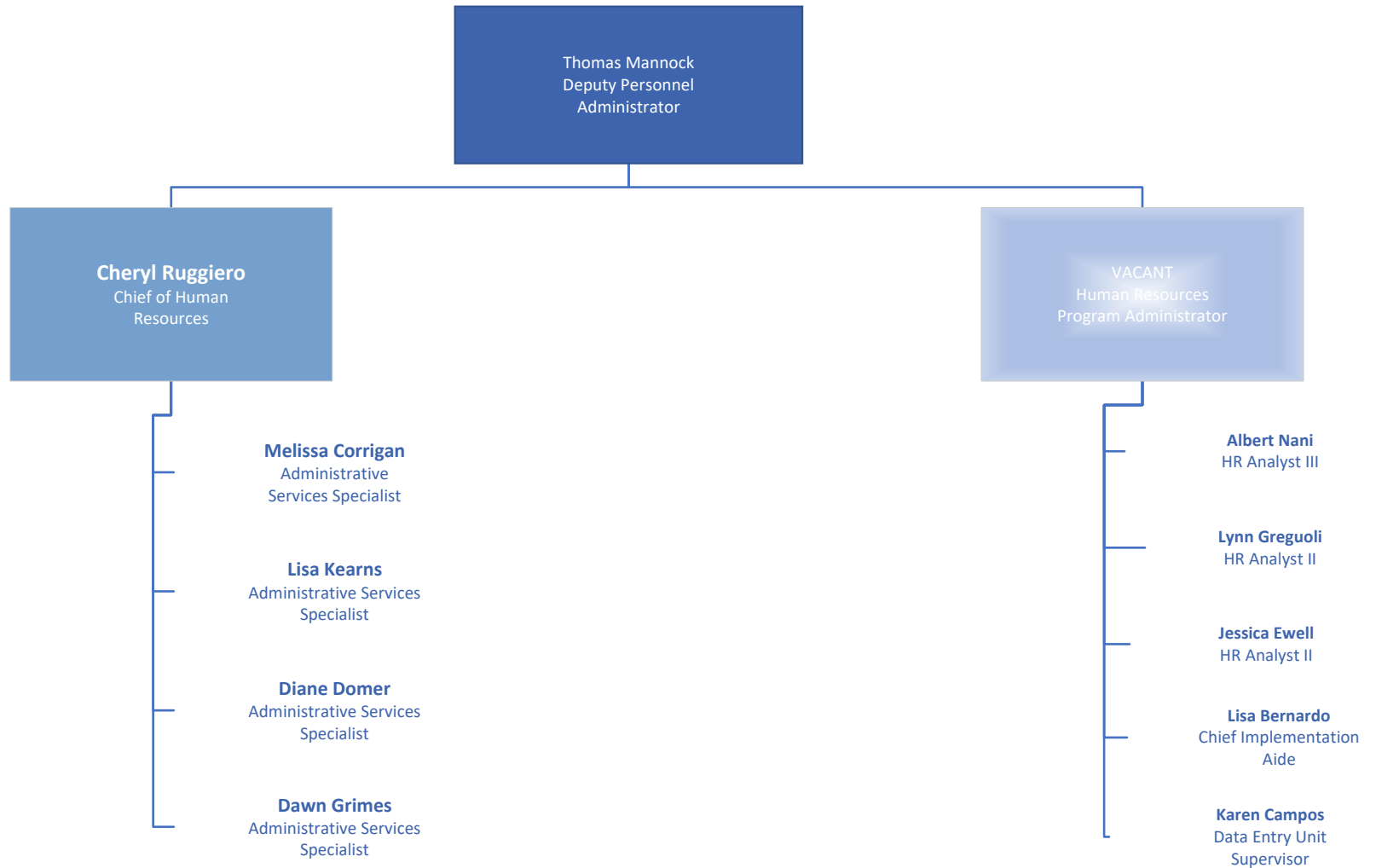
HUMAN RESOURCES LEADERSHIP TEAM



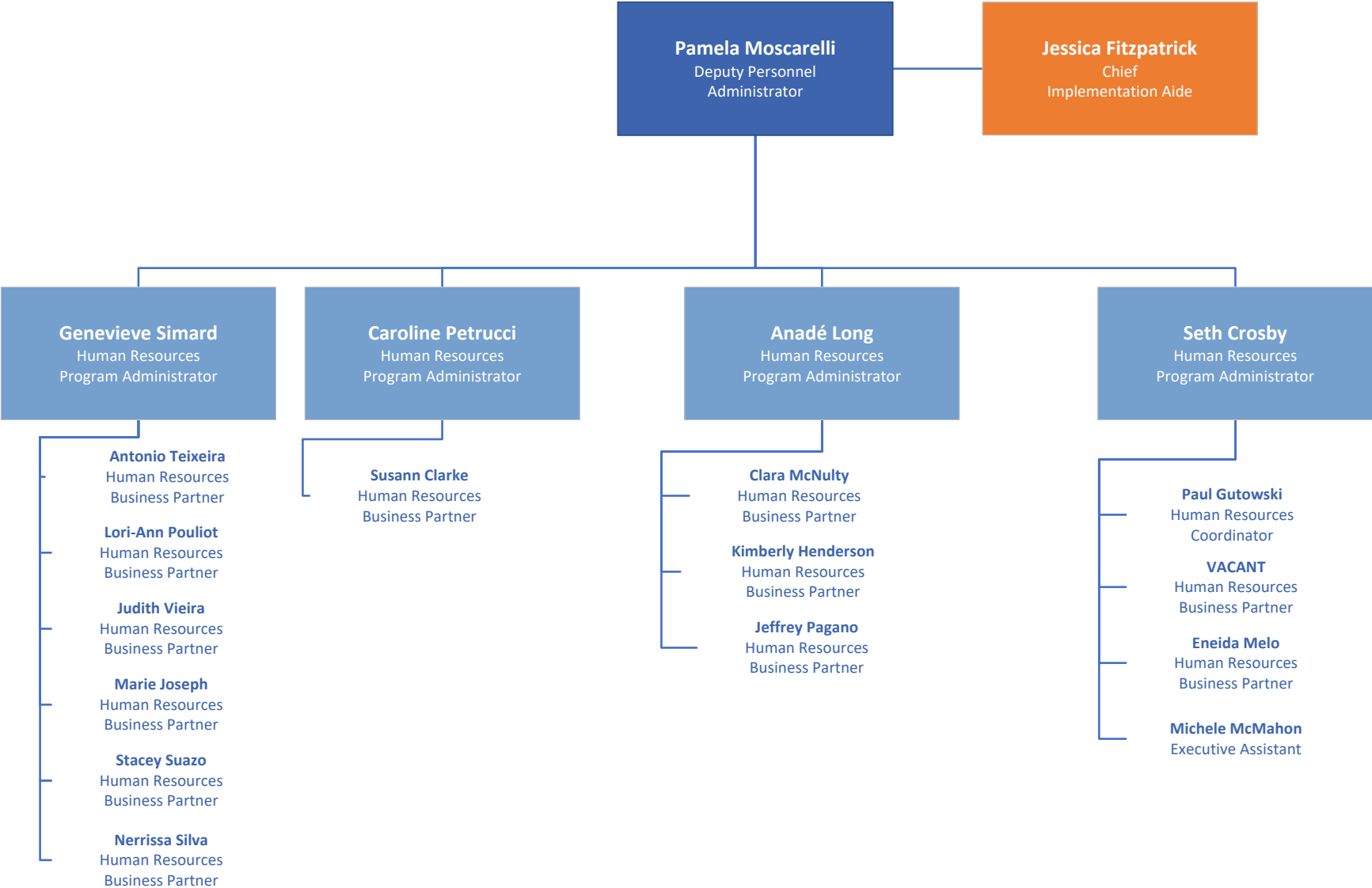
LABOR EMPLOYEE RELATIONS



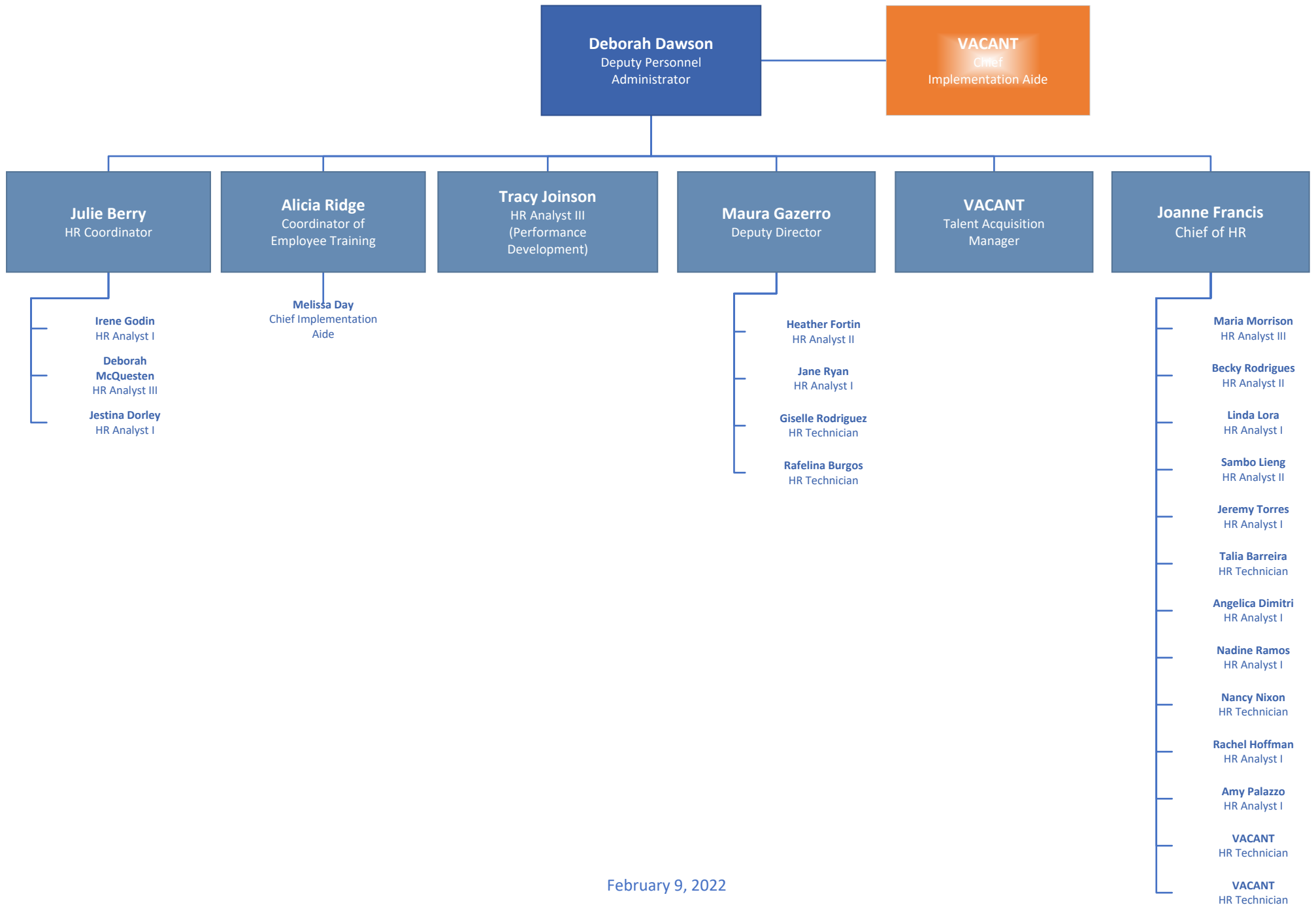
HUMAN CAPITAL MANAGEMENT



HUMAN RESOURCES BUSINESS PARTNERS

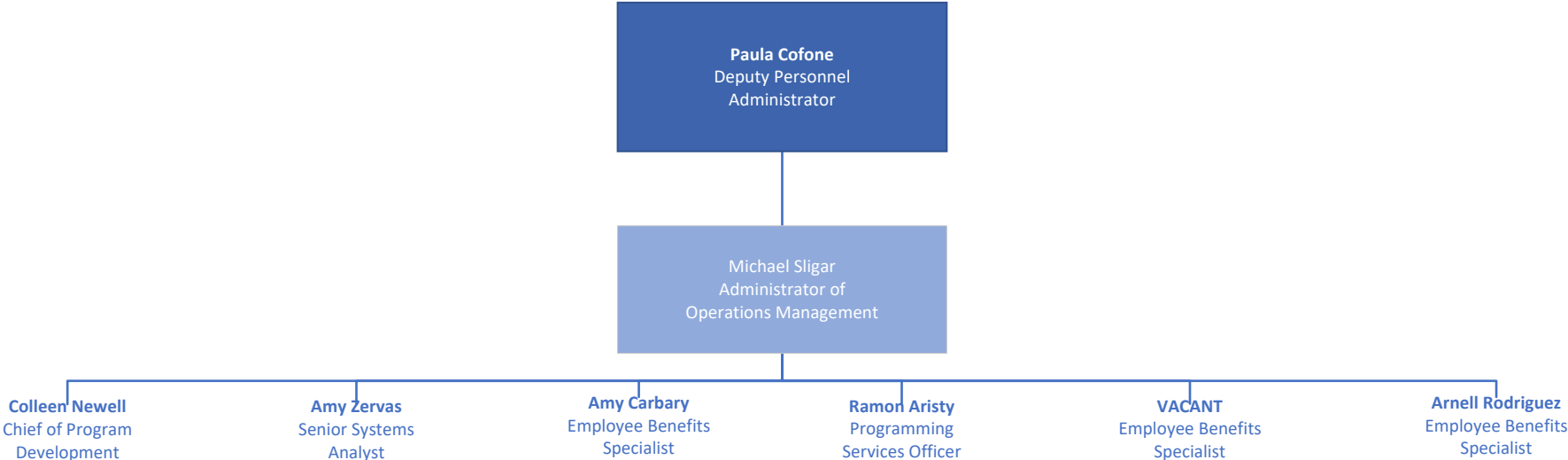


TALENT MANAGEMENT

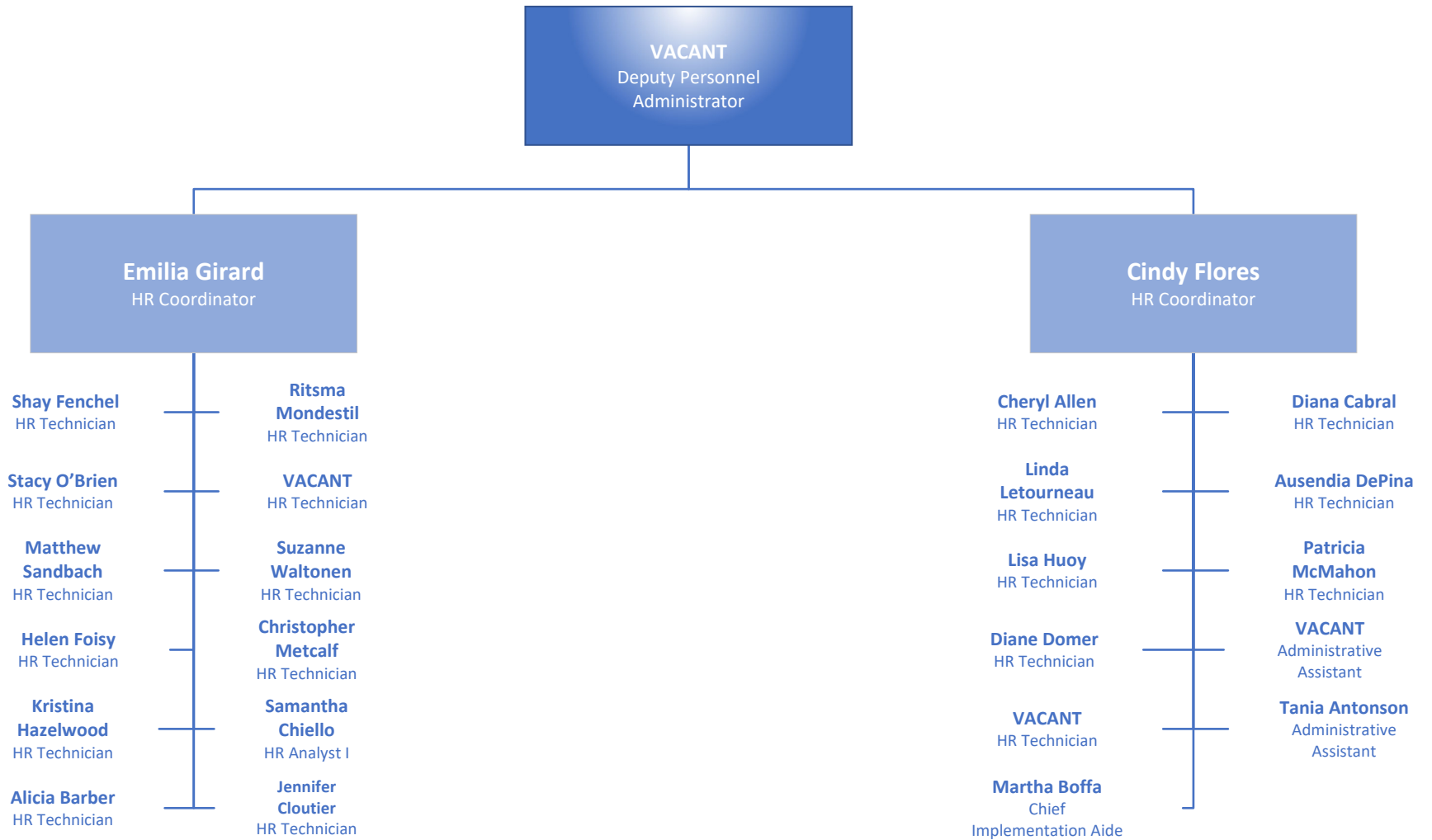


February 9, 2022

OFFICE OF EMPLOYEE BENEFITS



HR DATA & PAYROLL



WORKERS' COMPENSATION/DISABILITY MANAGEMENT UNIT

